

TREMEC TR-3655™ Transmission

5-Speed RWD Manual Transmission

The TREMEC TR-3655 is a 5-speed manual overdrive transmission designed for longitudinal engine vehicles.

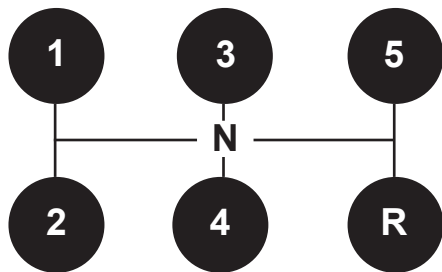
The hard finished gears are fully synchronized with carbon and sintered brass synchronizers, making the rugged TR-3655 ideal for light passenger vehicles and light commercial trucks. All gears are helical and shaved finished.

The all aluminum, end-load transmission utilizes an integrated clutch housing and extension housing.

TR-3655 Features at a Glance:

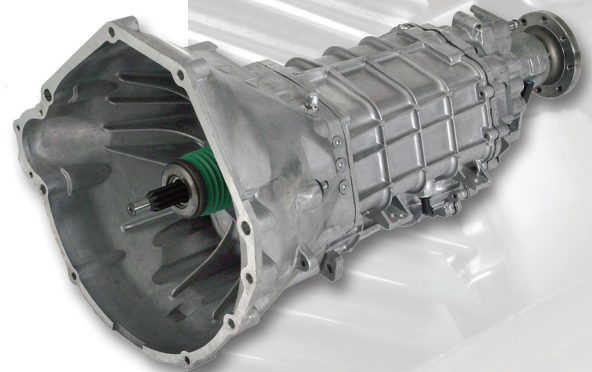
- Direct shift or semi-remote shifting systems available
- Lightweight design at 64 kg (141 lb) dry
- Three-piece aluminum end-load design with separate bell housing
- All gears synchronized, including reverse
- All gears are helical, case hardened and shaved finished for maximum strength
- Needle bearings under all gears reduces friction and noise
- Taper bearings on the input, main and counter shafts provide ample torque capacity
- Strut type synchronizers for all gears
- Power Take Off (PTO) provision available
- Designs available for four wheel drive configurations

Shift Pattern



TREMEC®

Torque Transfer Solutions®



TREMEC TR-3655™ Transmission

5-Speed RWD Manual Transmission



TREMEC TR-3655 Transmission Specifications

Type:	Rear wheel drive, five-speed manual overdrive transmission			
Maximum gross vehicle weight:*	7,500 kg (16,500 lb) <i>*For reference only. Not applicable to a specific application</i>			
Case:	Three-piece aluminum; end load design; 4WD also available			
Center distance:	85 mm			
Overall length:	710 mm			
Clutch housing:	Integrated bell housing			
Synchronizer type:	Double and single cone			
Lubricant type:	Synchromesh transmission fluid, Castrol Syntorq LT Synthetic or Gulf Gear LT 80W			
Lubricant capacity (approximate):	4.2 L (8.8 pt)			
Transmission weight (dry):	64 kg (141 lb)			
Power Take Off (PTO):	Available			
Available Gear Ratios <i>Alternative ratios available upon request; may result in different maximum input torque</i>	Gear	A	B	C
	1	5.28	4.22	3.82
	2	3.04	2.38	2.31
	3	1.66	1.47	1.42
	4	1.00	1.00	1.00
	5	0.75	0.81	0.83
	R	4.92	4.23	3.82
	Input Torque	380 Nm 280 lb-ft	415 Nm 305 lb-ft	450 Nm 330 lb-ft